



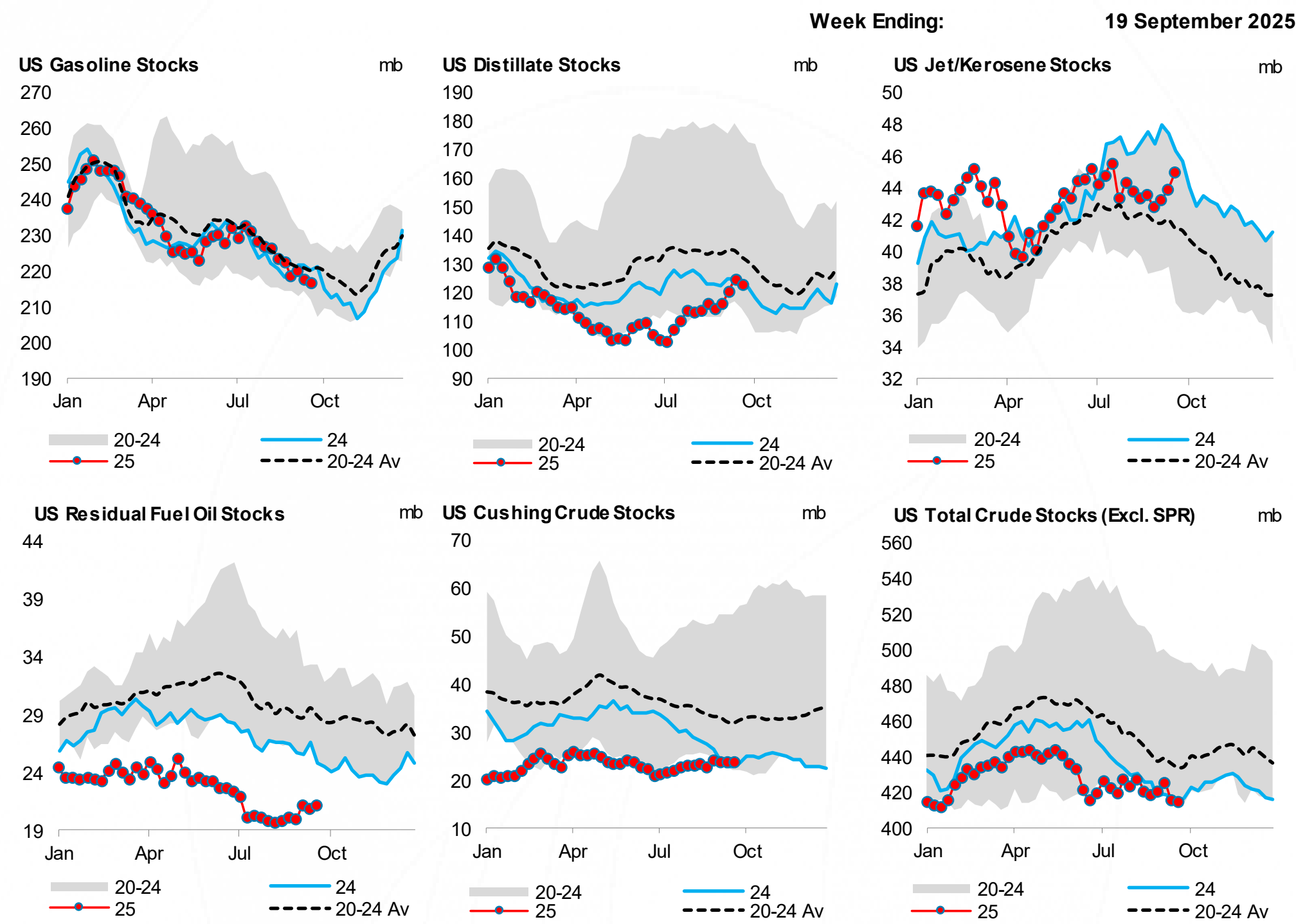
**FLUX** INSIGHTS

# Weekly Oil Stocks Report

Friday, 26 September 2025



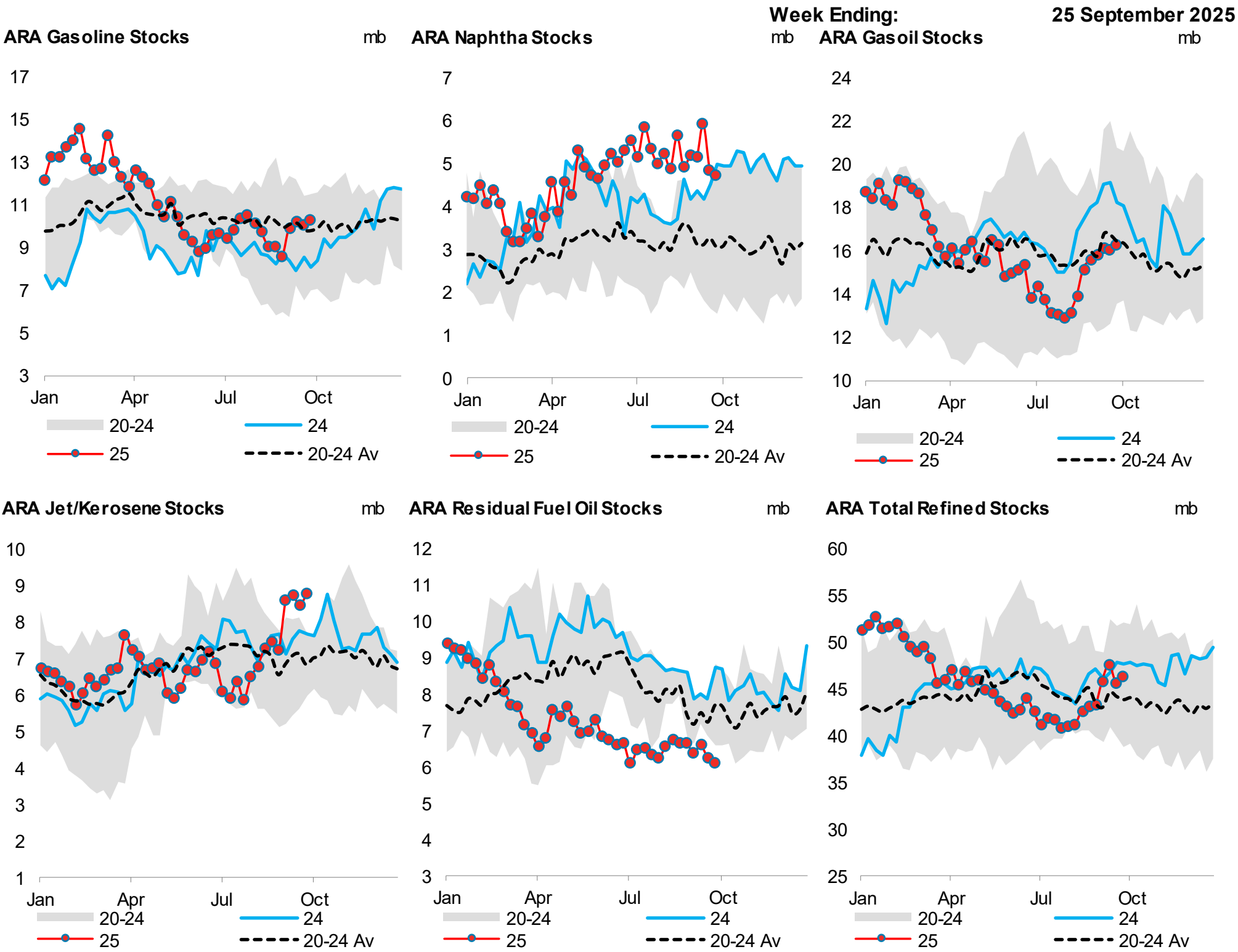
Fig.1 – US EIA crude and product stocks (million barrels)



US Inventories (mb)	19/09/25	v 1 wk ago		v 4 wks ago		v 52 wks ago		v 5 yr av	
		mb	%	mb	%	mb	%	mb	%
Crude	414.75	-0.61	-0.1%	-3.54	-0.8%	1.71	0.4%	-19.42	-4.5%
Cushing	23.74	0.18	0.8%	1.11	4.9%	0.91	4.0%	-8.36	-26.1%
Gasoline	216.57	-1.08	-0.5%	-5.77	-2.6%	-3.51	-1.6%	-3.98	-1.8%
Jet/Kerosene	44.95	1.05	2.4%	1.36	3.1%	-1.39	-3.0%	3.28	7.9%
Distillate	123.00	-1.69	-1.4%	8.76	7.7%	0.08	0.1%	-8.97	-6.8%
Diesel (<15 ppm)	111.89	-1.94	-1.7%	6.73	6.4%	-1.90	-1.7%	-9.18	-7.6%
Heating Oil (>15ppm)	11.11	0.26	2.4%	2.03	22.4%	1.98	21.7%	0.22	2.0%
Residual Fuel Oil	21.12	0.32	1.5%	0.99	4.9%	-3.67	-14.8%	-7.35	-25.8%
Unfinished Oils	82.86	-0.31	-0.4%	3.83	4.8%	0.35	0.4%	-0.69	-0.8%
Total Products	867.19	0.13	0.0%	26.77	3.2%	12.25	1.4%	17.34	2.0%
Total Crude & Product	1281.95	-0.47	0.0%	23.23	1.8%	13.96	1.1%	-2.07	-0.2%
SPR Crude	405.96	0.23	0.1%	1.76	0.4%	24.07	6.3%	-77.50	-16.0%

Source: US Energy Information Administration, Flux Insights

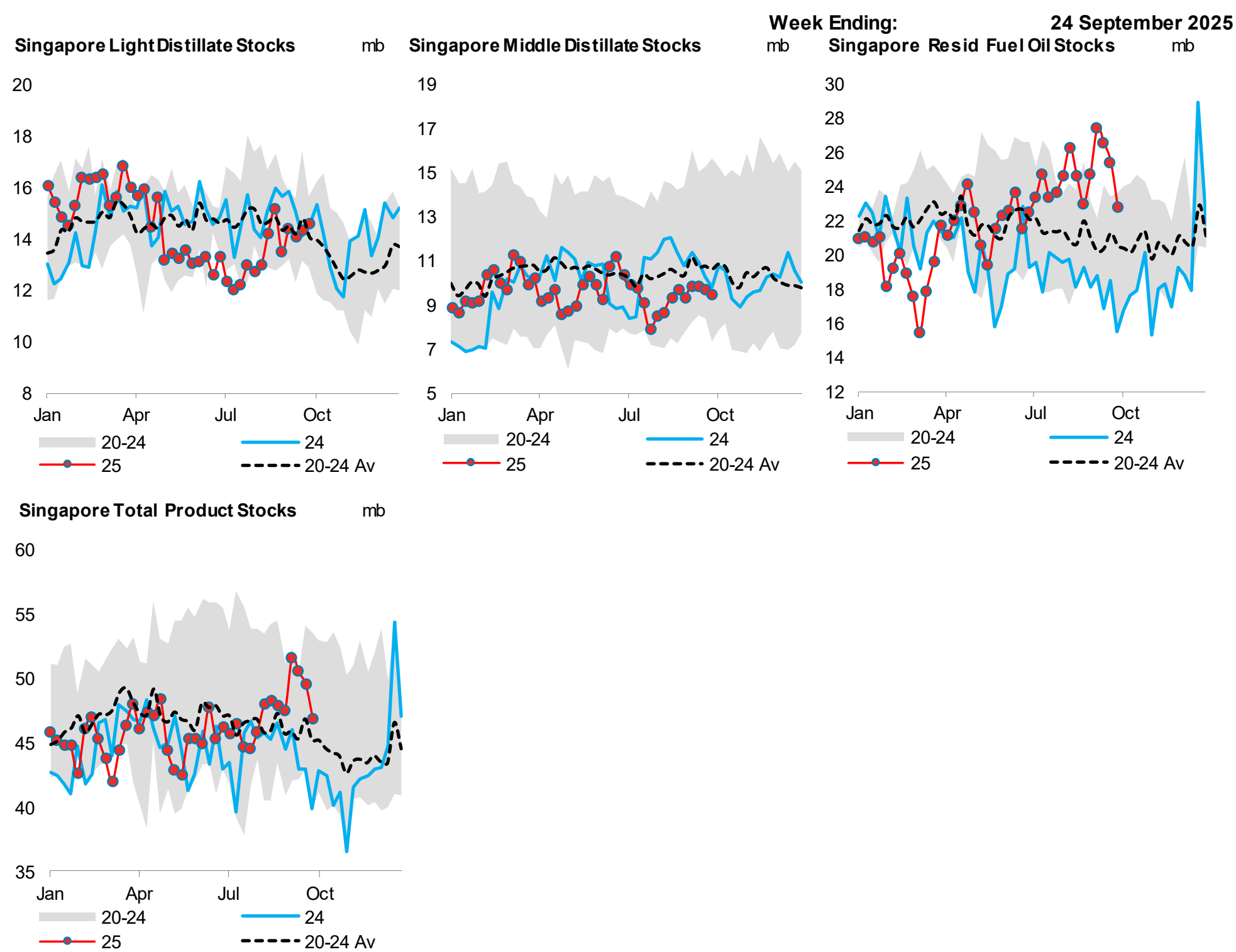
Fig.2 – Weekly ARA independent storage of oil product stocks (million barrels)



ARA Inventories (mb)	25/09/25	v 1 wk ago		v 4 wks ago		v 52 wks ago		v 5 yr av	
		mb	%	mb	%	mb	%	mb	%
Gasoline	10.33	0.30	3.0%	1.76	20.6%	2.26	27.9%	0.51	5.2%
Naphtha	4.73	-0.13	-2.7%	-0.46	-8.9%	-0.24	-4.8%	1.71	56.5%
Gasoil	16.28	0.20	1.3%	0.72	4.7%	-1.98	-10.8%	-0.17	-1.0%
Jet/kerosene	8.79	0.34	4.0%	1.54	21.3%	1.13	14.8%	1.89	27.5%
Resid Fuel Oil	6.11	-0.14	-2.2%	-0.54	-8.1%	-2.60	-29.8%	-1.47	-19.4%
Total	46.24	0.57	1.2%	3.03	7.0%	-1.43	-3.0%	2.47	5.6%

Source: Insights Global (PJK International B.V.), Flux Insights \*Data for week ending 4 September is unavailable

Fig.3 – Weekly Singapore oil product stocks (million barrels)

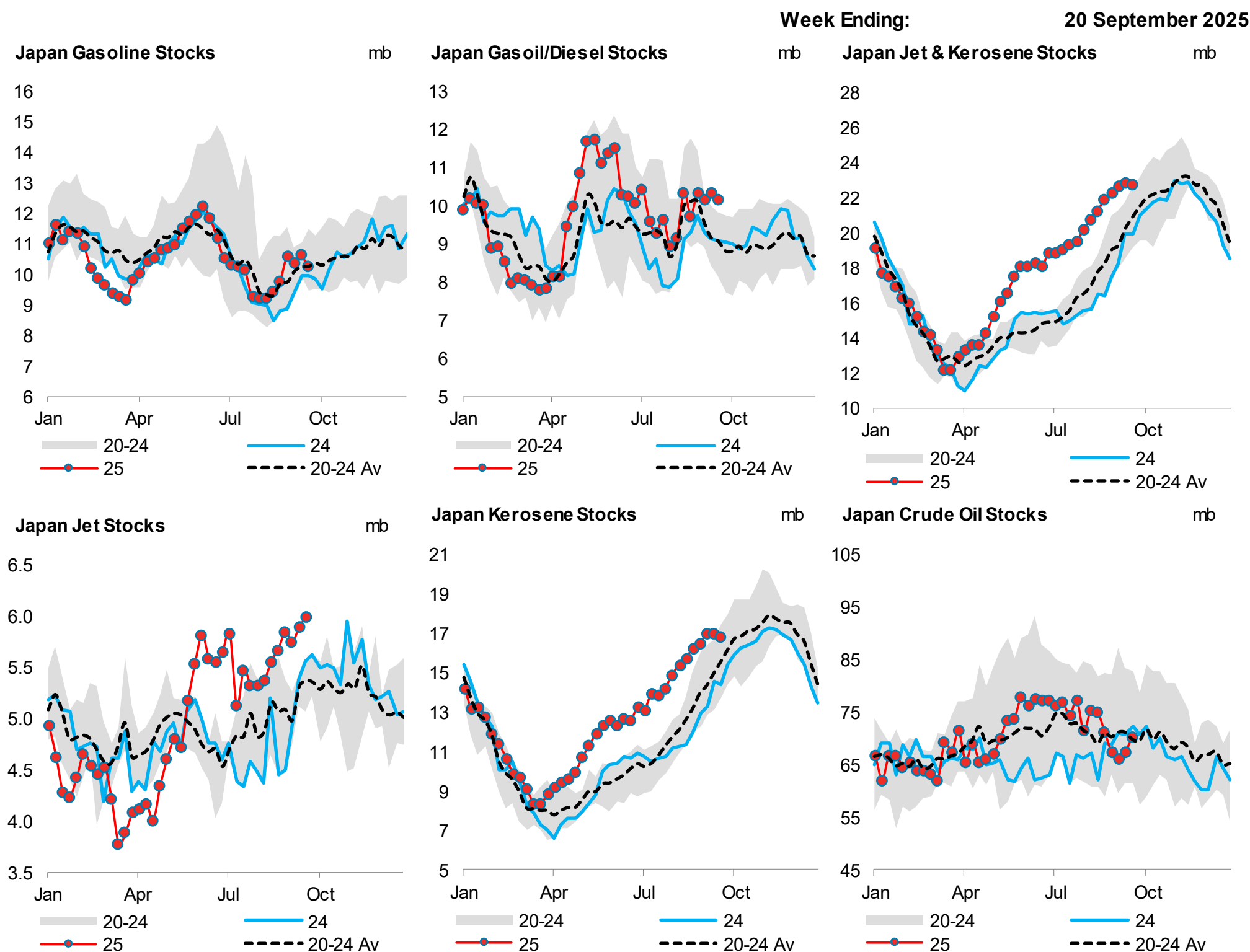


Singapore Inventories (mb)	24/09/25	v 1 wk ago		v 4 wks ago		v 52 wks ago		v 5 yr av	
		mb	%	mb	%	mb	%	mb	%
Light Distillate	14.616	0.25	1.7%	1.13	8.4%	0.15	1.1%	0.934	6.8%
Middle Distillate	9.479	-0.24	-2.5%	0.15	1.6%	-0.33	-3.3%	-0.981	-9.4%
Residual Fuel Oil	22.804	-2.61	-10.3%	-1.92	-7.8%	7.27	46.8%	2.721	13.5%
Total	46.899	-2.60	-5.2%	-0.64	-1.3%	7.10	17.8%	2.674	6.0%

Source: International Enterprise, Flux Insights



Fig.4 – Weekly Japan crude and oil product stocks (million barrels)



Japan Inventories (mb)	20/09/25	v 1 wk ago		v 4 wks ago		v 52 wks ago		v 5 yr av	
		mb	%	mb	%	mb	%	mb	%
<b>Gasoline</b>	10.25	-0.39	-3.7%	0.49	5.0%	0.30	3.0%	0.03	0.3%
<b>Jet &amp; Kerosene</b>	22.80	-0.02	-0.1%	0.92	4.2%	2.83	14.2%	1.72	8.2%
<b>Jet</b>	5.98	0.10	1.6%	0.31	5.5%	0.42	7.6%	0.63	11.8%
<b>Kerosene</b>	16.83	-0.11	-0.7%	0.61	3.8%	2.40	16.7%	1.09	6.9%
<b>Gasoil/Diesel</b>	10.14	-0.19	-1.8%	0.40	4.1%	1.05	11.5%	1.14	12.7%
<b>Crude</b>	70.30	3.01	4.5%	-0.93	-1.3%	-1.90	-2.6%	2.29	3.4%

Source: Petroleum Association of Japan, Flux Insights

Any recommendation, prediction, or suggestion as to an investment strategy has been prepared by Onyx Capital Advisory Limited ("Flux") in accordance with legal requirements designed to promote the independence of investment research ("Research"). This research is directed at, and therefore should only be relied upon by, clients who have professional experience in matters relating to investments. Flux's Research is not directed at retail clients or those in a jurisdiction in which this distribution may be restricted by local regulation or law. Flux's publications are prepared without taking into account your specific investment objectives and financial situation, therefore before acting on any information, you should consider its appropriateness. Flux's Research should not be regarded as a substitute for obtaining independent professional advice, including investment, tax and legal advice.

Flux's policy is to only publish Research that is impartial, independent, clear, fair, and not misleading. Any views expressed are those of Flux's at the time the Research was prepared. No assurances or guarantees are given as to the reliability, accuracy, or completeness of any such information or any matter contained in Flux's Research and such Research may contain statements which are matters of judgement and which are subject to change at any time without notice. Flux accepts no duty or liability, whatsoever, to any party in respect of its Research. Under no circumstances will Flux be responsible for any losses incurred (whatever their nature) by its clients resulting directly or indirectly from the use or interpretation of any information contained in its Research. Such Research is solely produced and published by employees of Flux and based on publicly available information. Past performance is not indicative of future performance.

Analysts are required to ensure that they have a reasonable basis for their analysis, predictions, and recommendations. Flux maintains strict regulatory controls to mitigate any conflicts of interest including information barriers and restrictions on the undertaking of personal transactions in financial instruments.

Flux is registered in England & Wales (company number 11472304) with its registered address at 95 Cromwell Road, Second Floor, London, United Kingdom, SW7 4DL. Flux is authorised and regulated by the Financial Conduct Authority (FCA no. 822509).